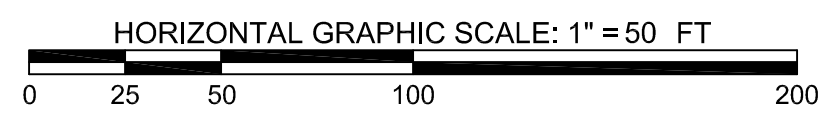
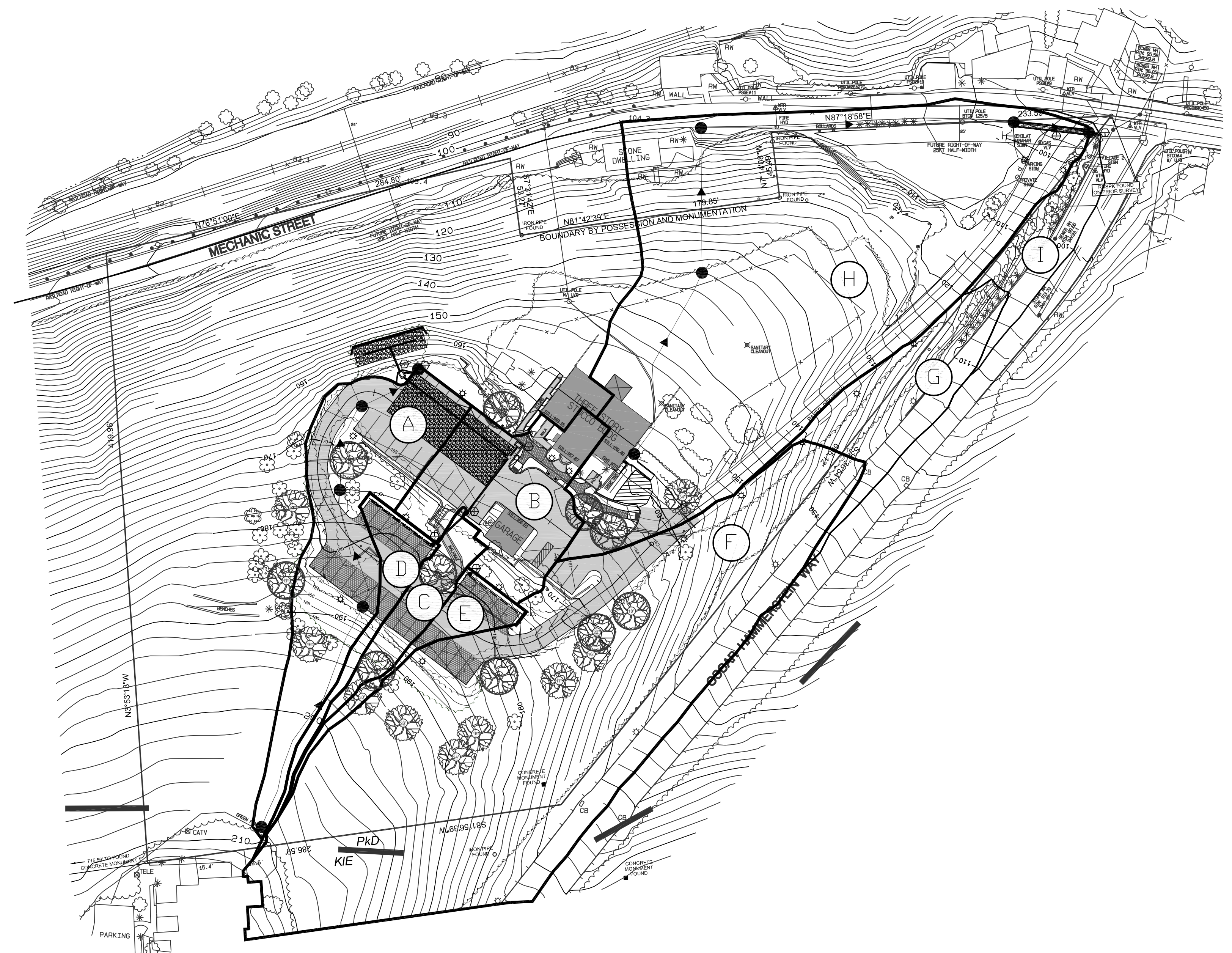


PRE-DEVELOPEMENT DRAINAGE AREAS

DRAINAGE AREA 'A'	34020 S.F.	0.781 ACRES
DRAINAGE AREA 'B'	50,290 S.F.	1.154 ACRES
DRAINAGE AREA 'C'	8,240 S.F.	0.189 ACRES
DRAINAGE AREA 'D'	75,750 S.F.	1.739 ACRES



● ———▶ ———● Tc PATH SEGMENT




POST-DEVELOPEMENT DRAINAGE AREAS

DRAINAGE AREA 'A'	15,571 S.F.	0.357 ACRES
DRAINAGE AREA 'B'	10,520 S.F.	0.242 ACRES
DRAINAGE AREA 'C'	3,500 S.F.	0.080 ACRES
DRAINAGE AREA 'D'	3,080 S.F.	0.071 ACRES
DRAINAGE AREA 'E'	2,580 S.F.	0.059 ACRES
DRAINAGE AREA 'F'	58,640 S.F.	1.346 ACRES
DRAINAGE AREA 'G'	8,070 S.F.	0.185 ACRES
DRAINAGE AREA 'H'	61,290 S.F.	1.407 ACRES
DRAINAGE AREA 'I'	4,520 S.F.	0.104 ACRES

NO.	DATE	REVISION
1	2/26/10	GILMORE & ASSOCIATES COMMENTS

<b>ZONING PERMIT PLAN</b> <b>DRAINAGE AREA MAP</b> LANDS OF <b>KEHILAT HANAHAR, TMP NO.27-10-2</b> NEW HOPE BOROUGH      BUCKS COUNTY				
 <b>KNIGHT ENGINEERING INC.</b> 4998 MECHANICSVILLE ROAD, P.O. BOX 247 MECHANICSVILLE, PENNSYLVANIA 18934 (215) 794-5958				
SCALE AS NOTED	DATE 7/6/2009	DRAWN BY BMC	PLAN NO. 5302	DWG. NO. 1 OF 1