

CONTEMPORARY AND TRADITIONAL

Bollards

LANTERN STYLE LUMINAIRES

CAVALIER 371

Contemporary Luminaire accent three and four foot walkways, courtyards, paths and landscape areas. The top and housing cap are heavy gauge cast aluminum held in place with stainless steel set screws. The overall height is 48". The pole is made of 3/4" galvanized steel. The pole is made of 3/4" galvanized steel. The pole is made of 3/4" galvanized steel.

Components:

- Cast Aluminum Housing Cap
- Polycarbonate Lens Reflector
- Level Adjustable Walls
- Powder Coat Lamp Fixing
- 40 Ballast
- Cast Aluminum Cover Plate
- Access Cover
- Cast Aluminum Anchor Rod
- Anchor Base
- Cast Aluminum Base
- Cast Aluminum Base
- Cast Aluminum Base

Alternates Configurations: Ball Top, Acorn Finial, Dome Top

ORDERING EXAMPLE

MODEL NUMBER	SIZE	LAMP	VOLTAGE	FINISH	OPTIONS
CAV 371 48"	100S	120	BK	HSS	

ORDERING CHART

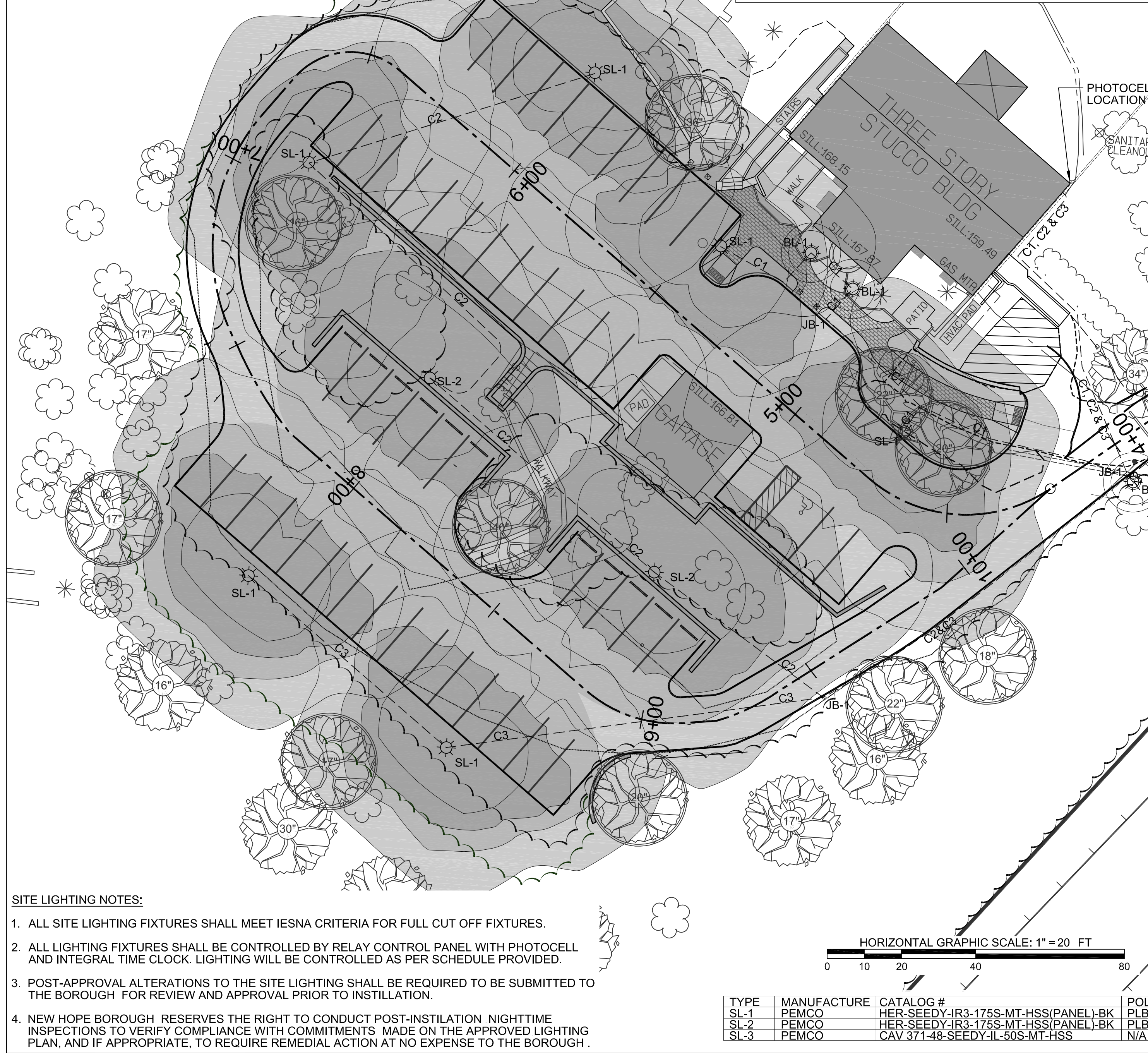
MODEL NUMBER	LENS	LAMP	VOLTS
HER	CL-CLR	175MH	240

HERITAGE

Proportion, aesthetics and detailing have been incorporated in a luminaire of outstanding traditional design and aesthetic appearance that is essentially suitable for many applications. Penco engineering provides top quality and specification type construction. Available with horizon mounted vertical lamp, top mounted vertical lamp, as well as top mounted horizontal lamp with hurricane globe. Three types of light distribution, IES Type II, III and V are available to meet varying conditions and design requirements. See page B-32 for photometrics. The direction of distribution is controlled by a simple field adjustment (rotation) of the internal refractor. Post mounting heights of 8 to 14 feet and wall mounting for architectural applications are offered. The Heritage luminaire will enhance any location.

ORDERING EXAMPLE

MODEL NUMBER	LENS	LAMP	VOLTS
HER	CL-CLR	175MH	240



ELECTRICAL CONDUIT CROSS SECTION

NOT TO SCALE

NOTE: E.C. SHALL PROVIDE TRENCHING AND CONCRETE PER INDUSTRY AND BOROUGH STANDARDS. 'SELECT FILL' BACKFILL SHALL BE PROVIDED. GEOTEXTILES ARE NOT REQUIRED.

CONCRETE LIGHT BASE DETAIL

NOT TO SCALE

DETAIL - OUTDOOR PHOTOCELL

NOT TO SCALE

TYPICAL BOLLARD ISOFOOTCANDEL CURVE

W/ HOUSE SIDE SHIELD

1.1 FC (TYPICAL)
2.1 FC (TYPICAL)
9.8 FC (TYPICAL)

TYPICAL BOLLARD ISOFOOTCANDEL CURVE

9.8 FC (TYPICAL)
2.1 FC (TYPICAL)
1.1 FC (TYPICAL)

TYPICAL COLONIAL LIGHT ISOFOOTCANDEL CURVE

0.1 FC (TYPICAL)
0.5 FC (TYPICAL)
1.0 FC (TYPICAL)
2.0 FC (TYPICAL)

SITE LIGHTING SCHEDULE

EVENT	LIGHTING AREAS	LIGHT ON	LIGHT OFF
EVERYDAY	C1	DUSK	DAWN
EVERYDAY	C2	DUSK	10:00 PM
HOLIDAYS	C1, C2 & C3	DUSK	11:00 PM

SITE LIGHTING NOTES:

- ALL SITE LIGHTING FIXTURES SHALL MEET IESNA CRITERIA FOR FULL CUT OFF FIXTURES.
- ALL LIGHTING FIXTURES SHALL BE CONTROLLED BY RELAY CONTROL PANEL WITH PHOTOCELL AND INTEGRAL TIME CLOCK. LIGHTING WILL BE CONTROLLED AS PER SCHEDULE PROVIDED.
- POST-APPROVAL ALTERATIONS TO THE SITE LIGHTING SHALL BE REQUIRED TO BE SUBMITTED TO THE BOROUGH FOR REVIEW AND APPROVAL PRIOR TO INSTALLATION.
- NEW HOPE BOROUGH RESERVES THE RIGHT TO CONDUCT POST-INSTALLATION NIGHTTIME INSPECTIONS TO VERIFY COMPLIANCE WITH COMMITMENTS MADE ON THE APPROVED LIGHTING PLAN, AND IF APPROPRIATE, TO REQUIRE REMEDIAL ACTION AT NO EXPENSE TO THE BOROUGH.

ZONING PERMIT PLAN

LIGHTING & UTILITY PLAN

LANDS OF
KEHLAT HANAHAR, TMP NO.27-10-2

NEW HOPE BOROUGH BUCKS COUNTY

KNIGHT ENGINEERING INC.
4998 MECHANICSVILLE ROAD, P.O. BOX 247
MECHANICSVILLE, PENNSYLVANIA 18934
(215) 794-5958

NO.	DATE	REVISION
1	12/16/09	NEW HOPE ZHB COMMENTS APPROVAL TO REMOVE TREES
2	2/26/10	GILMORE & ASSOCIATES COMMENTS

SCALE	DATE	DRAWN BY	PLAN NO.	DWG. NO.
1" = 20'	6/26/2009	BMC	5302	7 OF 7